

The 100 feet high stump at Bellthorpe

There was a stump about 100 feet high, a Blackbutt tree felled by Mr V N (Walter) Lovf. This landmark was situated in the south-western corner of Portion 283, Parish of Durundur. In early 1974, Mr Lovf described the felling of this tall tree:



Valdemar Nielsen Lovf (known as Walter):

'With regard to the tall stump referred to, it is a Blackbutt, roughly 10ft girth breast high and approximately 4ft girth at the top.

I took a measurement using an Abney level and it was 103 ft in height.

I did this on my own when 16 years of age in 1923.

I used two boards and coming down was a problem. I bored a hole in the centre of the outer end of the board and similar near the shoe.

This allowed me to secure the shoe end into the board hole with the outer end held higher just as one does in ordinary use. I cut larger and deeper board holes than usual to help in this matter.

When the top of the tree left the stump it swayed considerably, but I was sitting on the board with my arms claspng the tree as I had fallen another tree 45ft high and it made me aware of this.'

It will be noted that Mr Lovf refers to the shoe on the spring-board. Some called it a 'shoe'; others spoke of a 'clip'.



Woodford Historical Society 2025

Compiled using information from:-

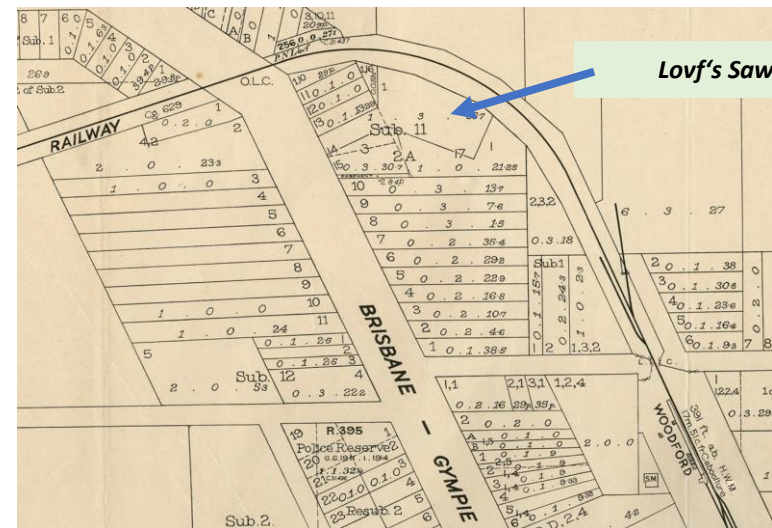
*Trove Newspapers, local historian Ron Trim,
Sawmills and Tramways by John Kerr*

Fact Sheet – W6



Sawmills of Durundur ...

Lovf's Sawmill (c1915 – 1928)

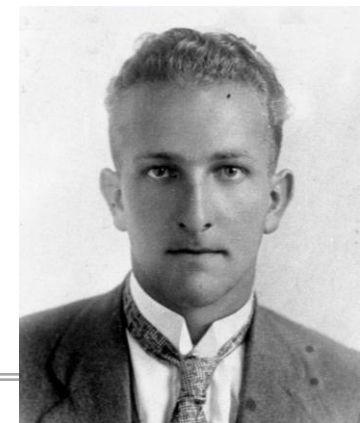


1936: Survey Map of Woodford

In about 1915, Peter Nielsen Lovf purchased a sawmill owned by Beanland, King & Co near the railway at Woodford.

Valdemar Nielsen (Walter) Lovf (1907-1988)

Woodford Sawmills



Lovf's Sawmill *continued*

Peter Nielsen Lovf (Walter Lovf's father) emigrated from Denmark and was a wheelwright by trade.

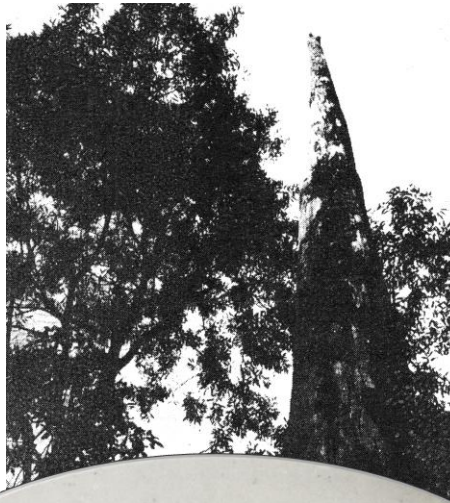
He came to the Woodford area in about 1909 with his wife and children and lived at what was then called Bellford (Bellthorpe) and tried his hand at farming.

He went into partnership with Anders Anderson Fredin in a sawmill at Woodford in 1910. By the next year he put his share of the sawmill and his farm up for sale.

FOR sale. 415 acre scrub, southern Blackall, elevation 1700, rainfall 60, permanent water, 90 acres felled and under artificial grasses, £6 acre; cattle, horses, &c.; also half share in sawmill at Woodford, carried on under the name of Fredin & Lovf. Further particulars apply Pa. N. Lovf, Woodford. gx

From TROVE: *THE BRISBANE COURIER* 21 August 1911

In about 1914, Peter Lovf established a sawmill in the Bellthorpe area, but it too was a short venture.



**'This was the best stem I ever saw.
The butt log of Bunya yielding 12,413 super feet.'**

1923: Pointing to the sky. A stump over 100 feet high at Bellthorpe.

Photo from V Lovf



c1920: Homestead of Peter Lovf in Woodford

Photo courtesy of City of Moreton Bay Reference No: CLPC-P1703



c1920s: Bullock Team driver Harry Cannon sitting on the wagon shaft.



Local historian Ron Trim's recollections:

In Woodford, where the Bowling Club is now, a mill had been built by Tom Beanland, J King, J Higgins; already had a siding built for them in 1913. The Lovf family bought this mill around 1914/1916 and it ran until it burnt in 1928.

By 1917, he had purchased the sawmill from Beanland, King & Co near the railway siding at Woodford Station.

In December 1921, Lovf's Ltd was registered as a company.

SAWMILL BURNED.

BLAZE AT WOODFORD.

WOODFORD, November 16.

About 5 a.m. yesterday the sawmill of Messrs. Lovf, Ltd., was found to be on fire. Miss B. Riddle gave the alarm, but the fire had got too good a hold for helpers to do anything, and the mill became a total wreck in a very short space of time. It is understood that the premises were partly insured.

Lovfs Sawmills, Woodford

From *QUEENSLAND PO DIRECTORY* 1928

Peter Lovf died in 1926, with his sons carrying on the business until 1928 when the mill was destroyed by fire.

From TROVE: *THE BRISBANE COURIER* 17 November 1928