

TO CAPITALISTS AND OTHERS.

To be Sold as a Going Concern by private tender the whole of the Plant, Property, and Effects of the Woodford Saw-mill Company, Limited, comprising 80h.p. Waterous Mill Plant, Running-out Bench, Rogers' Planing Machine, Pumps, &c., &c., the whole in first-class working order, Eight Acres of Land and Buildings, situate on the Durundur-road, in a good timber district, and within fifty miles of Brisbane. For Capitalists or anyone desirous of getting into a first-class business the above Mill offers a capital investment.

For further particulars apply Manager, Woodford Saw-mill Company, Limited, Yatesville, via Caboolture.

From TROVE: *THE BRISBANE COURIER* 12 August 1889

The Woodford Sawmill has changed hands to a Mr. Govett, from Melbourne, the purchase price, I hear, being about £1000, so the company has not made a fortune over it. The incoming purchaser may make a better show.

From TROVE: *MORETON MAIL* 27 September 1889

It is reported that the Woodford saw-mill is likely to be set going again, as the owner, Mr. Govett, has been giving some signs that he has not quite forgotten his purchase, although the mill has been idle ever since it changed hands, now about 18 months.

From TROVE: *THE WEEK* 10 July 1891

Sadly, the mill did not reopen.



Woodford Historical Society 2025

Compiled using information from:-

Trove Newspapers, local historian Ron Trim

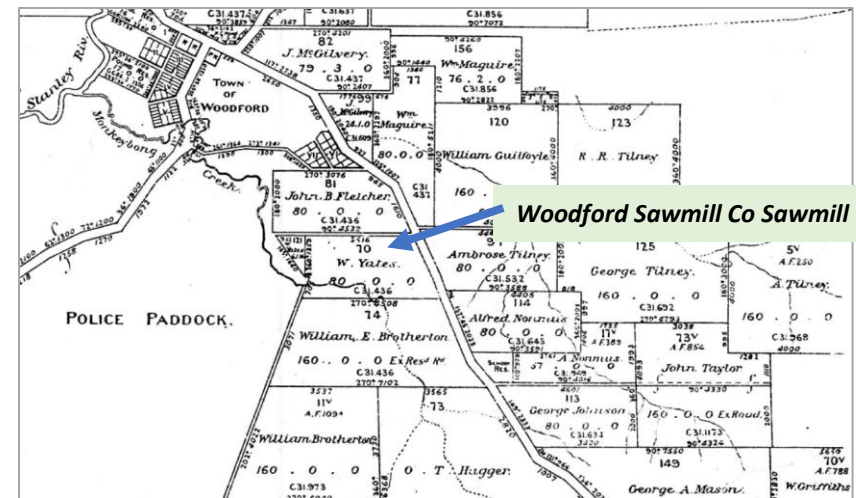
'Sawmills and Tramways' by John Kerr

Fact Sheet – W1



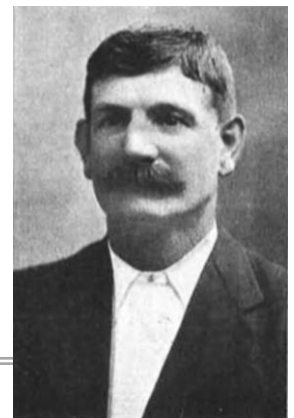
Sawmills of Durundur ...

Woodford Sawmill Co Sawmill (1886 –1889)



1890: Survey Map of Woodford

In 1886, the Woodford Sawmill Co erected a sawmill at Yatesville and it operated for a few years.



James Kirby (1863-1956)

Woodford Sawmills

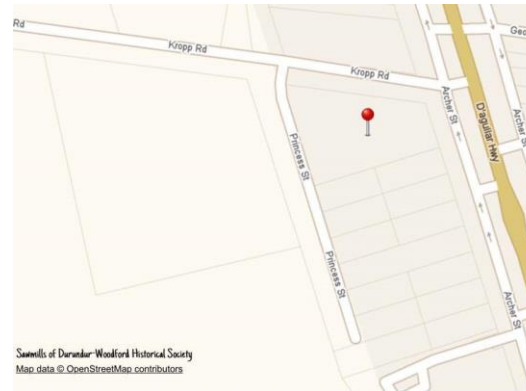
Woodford Sawmill Co Sawmill *continued*

James, as a young boy, journey to Australia in 1866 onboard the ship 'Star of England' with his mother Jane and his older brother Alexander. They had escaped the hardship of the workhouse.

James and his older brother made their way to Durundur. In 1886, they teamed up with other locals to form the Woodford Sawmill Company. They were timber-getters you see.



1920s: The Police station and house on the main road at Woodford
Photo courtesy of City of Moreton Bay
Ref No: CLPC-P0704



84 Archer Street,
Woodford
Site of the Woodford
Sawmill Co

'Sawmills and Tramways' by John Kerr

The Woodford Sawmill Company Limited was registered with a capital of £1800 in 60 shares. It was set up by a number of sawyers, tradesmen and businessmen, mostly from the area. Owen T. Hagger, a carpenter, became managing director but in 1889 the sawmill was sold. The company was wound up, paying the creditors in full.

Local historian Ron Trim's recollections:

The first sawmill to be erected in Woodford was behind where the Police station is now. It was owned and operated by James Kirby, Alex Kirby and William Tracey Senior. It operated around the end of the century but for only a few years closing because of financial problems.



WOODFORD WHISPERS.—A correspondent writes—"At a well-attended meeting held on the 8th inst, preliminaries were initiated respecting a sawmill to be erected here. It was proposed that the new venture be styled the Woodford Sawmill Company, representing 60 shares of £30 each. Nearly all the shares were at once taken up, and a sum of £90 was collected in the room, to be followed in a week hence by the remaining portion of the first deposit per share. A board of directors, manager, secretary, and treasurer were appointed, and the machinery ordered, and the erection of the mill will be proceeded with as little delay as possible. The shareholders are to be congratulated in their enterprise, which will not only recoup them but also be a great advantage to the district."

From TROVE: *MORETON MAIL* 15 May 1886

I HAVE to report good progress here since my last letter The Woodford Saw-mill Company is just getting into business; we are to have the plant landed at Caboolture next week, and the manager calculates that in six weeks he will be able to commence sawing.

From TROVE: *MORETON MAIL* 3 July 1886

The Woodford sawmill is in full swing, and is kept half-time cutting local orders.

From TROVE: *MORETON MAIL* 23 October 1886

That a planing mill in South Brisbane in connection with the Woodford Sawmill Co. is about to be started.

From TROVE: *MORETON MAIL* 23 October 1886

In 1887, the Woodford Sawmill Co leased a quarter acre of wharf property with one chain frontage to the Caboolture River from the Caboolture Divisional Board for £2 10s per annum.

Monday morning we went to see the Woodford sawmills, situated in the main street, and now completing the first year of their existence and that in a very satisfactory manner, judging from the balance-sheet. The manager, Mr. M'Kinnon is an American and a thoroughly practical man, and master of his profession, judging from the able manner in which he handles the machinery, and the timber he puts through his hands, being exceedingly well cut and of equal thickness. The building is of wood and the roof covered with iron. Its dimensions are 180 feet by 80, and contains two circular saws and a flooring machine driven by a 40 horse-power engine and capable of turning out 10,000 feet of sawn, and 12,000 feet dressed stuff per day with only five men to work it. The timber is the best quality mountain pine, beech, and cedar. There are two blacksmiths'

From TROVE: *THE TELEGRAPH* 3 December 1887